



臺灣

南投

地方檢察署

TAIWAN NANTOU DISTRICT PROSECUTOR'S OFFICE



# Taiwan Nantou District Prosecutors Office Index

I 、History : .....	3
II 、Jurisdiction : .....	5
III 、Organizational System : .....	7
IV 、Staffing : .....	10
V 、Prosecution Business Overview: .....	11
VI 、Judical Protection Business .....	16
VII 、Administrative Operation: .....	24
VIII 、Conclusion: .....	28
IX 、Service Information: .....	30

## I 、History :

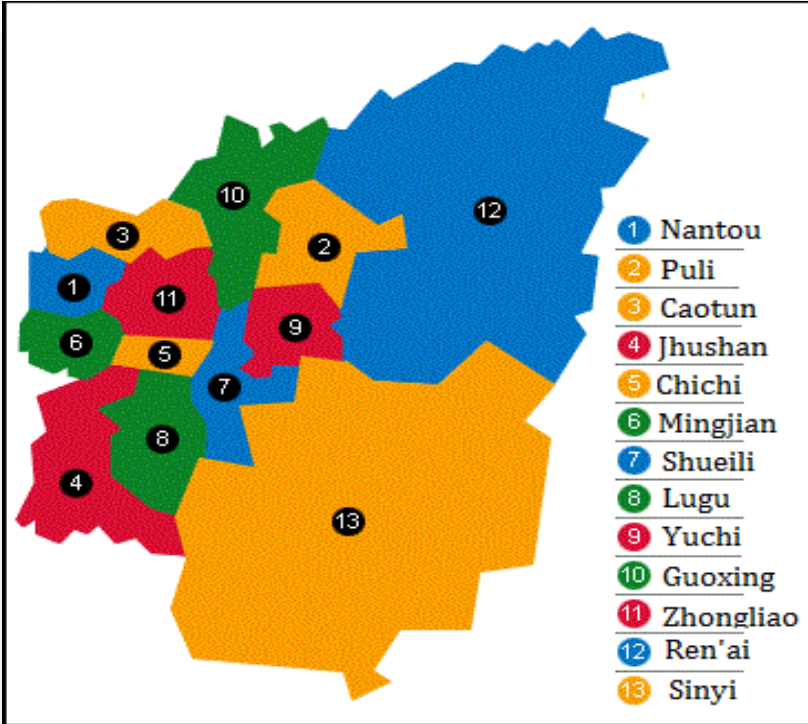
Nantou County is in the center of Taiwan and also the only county without any direct access to the sea. It has a large area filled with high mountains, valleys and rivers where many aborigines live. The county's thirteen townships and cities mainly depend on agriculture. At first, Nantou County was under the jurisdiction of Taichung District Prosecutors Office and citizens needed to travel to Taichung in the litigation procedure . To overcome the inconvenience, the Nantou Branch Office of Taichung District Prosecutors Office was established in 1982.



And in 1987, under the Court Organization Act which states that every county (city) should have one court; the Nantou County Council sent their proposal to Ministry of Justice through Taiwan provincial government. In 1988, the Nantou Judicial Construction Committee, consisting of Taichung District Court, Taichung District Prosecutors Office and Taichung Detention Center, began to prepare for the establishment of Nantou District Prosecutors Office. Begun on July 19, 1991, it was accomplished in July 1, 1994. Nantou District Prosecutors Office officially started to accept cases on August 1, 1994. The office has five floors, one below ground level and four above. It is conveniently located at the center of Nantou City, adjacent to the Nantou County Government.

## II 、 Jurisdiction :

Nantou shares a border with Hualien County on the east, Changhua County on the west, Kaohsiung City and Chiayi County on the south and Taichung City on the North. With a total area of 4,106 square kilometers, it holds one ninth of territory of the whole province. The whole county consists of thirteen parts which are one city (Nantou), four towns (Puli, Caotun, Jhushan, Chichi) and eight townships (Mingjian, Shueili, Lugu, Yuchi, Guoxing, Zhongliao, Ren' ai, Sinyi ). The area is vast and filled with high mountains and beautiful landscapes where the people are very nice and peaceful. Nantou has a population of approximately 510,000 (September 2014).



### III 、Organizational System :

Our office is subordinate to Taiwan High Prosecutors Office and its main tasks are prosecution of crimes, enforcement of criminal judgments, promotion of judicial protection, maintenance of social security, prevention of crimes, and security of civilian life and property.

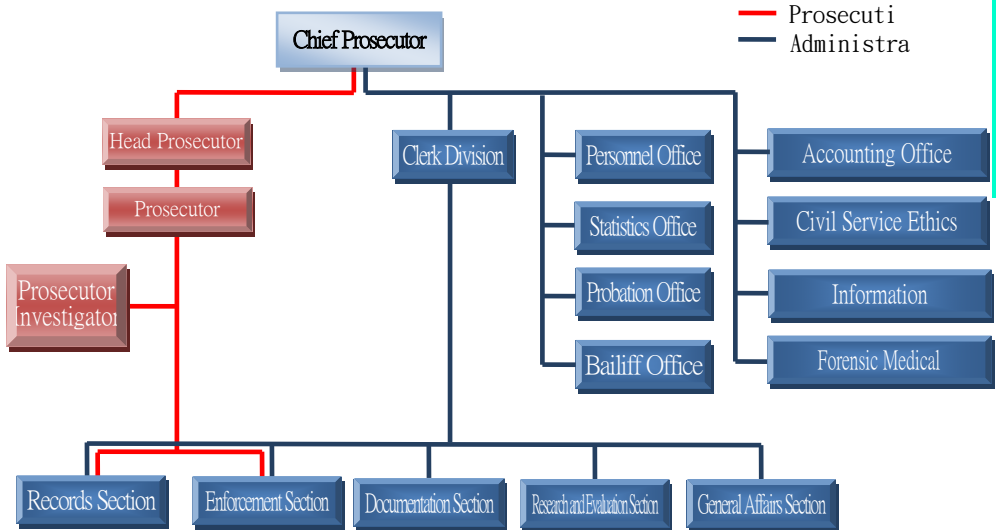
Our office are placed one Chief Prosecutor and a certain number of head prosecutors, prosecutors, prosecutor investigators, forensic medical examiners, and forensic investigators. Our organization consists of the Clerk Division, Probation Office, Personnel Office, Accounting Office, Statistics Office, Ethics Office and Information Management Office as level-1 agencies.

There are five sections under the Clerk Division which are Records Section, Enforcement Section, Documentation Section, General Affairs Section and Research and Evaluation Section.

In addition, the Chief Prosecutor supervises the Nantou Detention Center, Agency of Correction, Ministry of Justice and the Nantou Juvenile Detention House, Agency of Correction, Ministry of Justice under the law.



# Organization Framework of Taiwan Nantou District Prosecutors



## IV、Staffing：

Staff Number on October, 2014

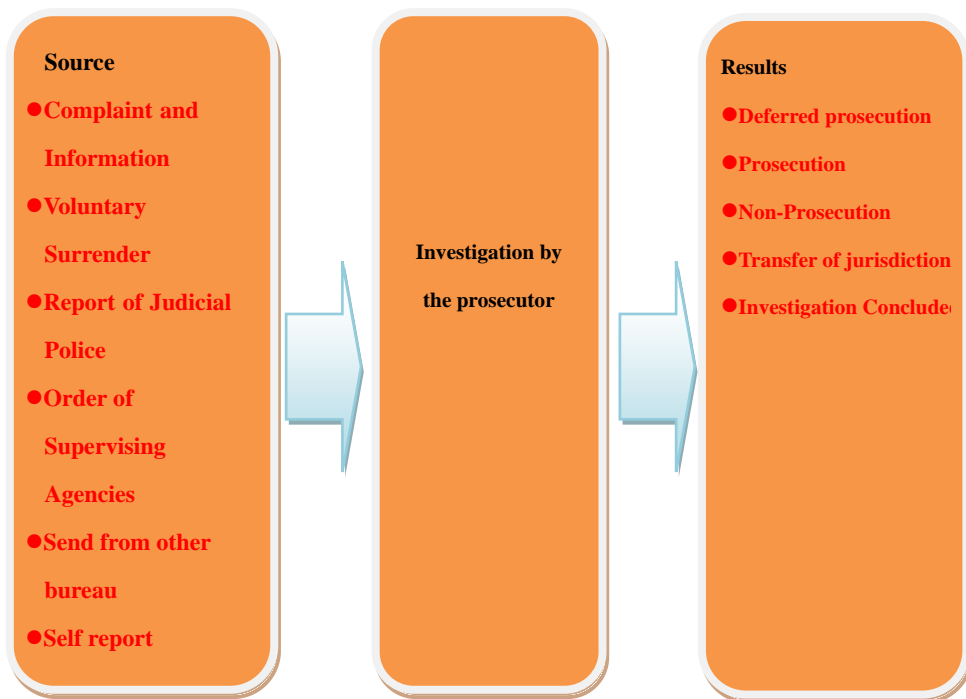
Title	Actual number of people in-service
Chief Prosecutor	1
Head Prosecutor	4
Prosecutor	21
Prosecutor Investigator	9
Chief Probation Officer	1
Probation Officer	5
Forensic Medical Examiner	1
Forensic Investigator	2
Chief Secretary	1
Clerk	31
Chief Bailiff、Deputy Chief Bailiff、Bailiff	13
Staff	16
Technician、Janitor、Driver	13
Total Actual number of people	118

## V、Prosecution Business Overview:

Our office is focused on investigation, prosecution, and enforcement of criminal judgments, for example, detection of corruption and bribery, elimination of gangsters, investigation on drugs, national land conservation, investigation of serious criminal cases, prevention of economic and computer/cyber crimes, and prevention of the child and juvenile sex trade, protection of intellectual property rights, supervision of mediation of townships and promotion of law. In addition, we also strengthen probation and rehabilitation to help those who were once involved in crime to start a new life. We also actively promote protection for crime victims, expecting they can receive proper care and legal compensation.

### 1. Criminal Investigation

It is a preparatory proceeding that the prosecutors investigate criminals and collect evidence of crime to understand the suspicion of having committed a crime and decide whether to bring public prosecution. The process is as follows:



## 2. Public Prosecution business

To carry out public prosecution, a prosecutor will take cross-examination during full session and shall bear the burden of proof as to the facts of the crime charged against an accused. We assist the court to discover the truth and establish justice by examining witnesses and inquiring the accused, investigating evidence and providing reports.

## 3. Criminal Execution business

(1) Our Tasks: enforcement of criminal judgments, deferred prosecution, parole probation, and conditional probation.

- (2) After a final criminal case is determined by the court, the prosecutor will immediately command enforcement of the judgment, to implement the State power of criminal punishment. To reduce the drawbacks for short-term imprisonment and the ratio of recidivism in new inmates imprisoned, the short-term imprisonment may be ordered commutation to fines or community services.
- (3) As for petition for commutation to fines, if the inmate has financial difficulties and cannot pay off the payment at once, one can apply for installment payments.

(4)Commutation to community service system:

It allows who have severe financial difficulties may commute their imprisonment to labor and services so that they can maintain their original job and life, as well as family care. It can also reduce new social problems created by imprisonment. The labor and services they provided also save labor costs of agencies which are served, achieve positive effects on value creation and feed-back to society, and also reduce state treasury expenditures by eliminating prison correction expenses.

## VI 、Judical Protection Business

### 1. Probation

(1) Responsible for community treatment work of offenders over 18

- A. Execution of parole, probation and protective measure.
- B. Execution of probation with obligatory services, deferred prosecution with obligatory services and any necessary orders.
- C. Execution of probation in place of monitored sanctions, abstinence sanctions and compulsory working sanctions.
- D. Execution of cases commuted to community service



## (2) Operational priorities

A. Classification of Cases: Implement intensive probation and supervision of those offenders with high possibilities of recidivism and provide deferred prosecution or conversion to community service for those who committed misdemeanors or negligently committed the offense.

B. Education and Consultation: For those who are on probation, we will give courses about law, life and gender equality. For ordinary citizens, we provide information about the law, anti-drugs, anti-bribery and visiting tours of judicial offices.

- C. Judicial Protection Offices: There are offices in Jhusan, Puli, Sinyi and Ren'ai for persons under probation to register.
- D. Restorative Justice: We provide chances for crime-related parties to communicate in order to restore the damage caused by crime and let them deal with the consequences together. Unlike the existing criminal justice system which focuses on penalties, the restorative justice focuses on healing damages and, recovering relationships, and gives a new meaning to justice. Justice will prevail when we find truth, apology, comfort, responsibility and healing.

E. Assisting Measures: We provide services of  
“Employment Center” , “Medical Caring  
Union” and “Free Juridical Consultation  
via Internet” ..

## 2. Taiwan After-care Association, Nantou Branch

### (1) Purpose of Service

Using goodwill to counsel personal from prison with self-reliance, adaptability to social life and prevention of recidivism, to maintain social orders.



### (2) Objects of Service

The objects of protection in accordance with provision set forth in Article 2 of Rehabilitation Protection Act comprise the following 10 types:

- A. Prisons by expiration of sentence or pardon.
- B. Prisoner on parole, bail or receiving medical treatment on bail.
- C. Execution of rehabilitative preservation measures or executors exempt from punishment.
- D. Persons having completed the execution of juvenile probation.
- E. Persons not prosecuted by disposition with appropriate prosecution according to Article 253 of Criminal Procedures or Article 147 of Code of Court Martial Procedure.
- F. Declared of exemption from punishment or executor exempt from punishment

Declared of probation.

- G. Persons claimed for sentencing or detention during the suspension of execution or refused to imprison.
- H. Juveniles under the probation of probation officers.
- I. Under ongoing protective control measures.

### (3)Service

Providing sheltering, skill training, counseling for employment, counseling for study, counseling for medical treatment, counseling for fostering, counseling for emergency aids, travel funds, escorting home, and entrepreneurship loans.

(4)Service Number

TEL : 049-2243570

FAX : 049-2232549

Email : [after-care540@mail.moj.gov.tw](mailto:after-care540@mail.moj.gov.tw)

## VII 、 Administrative Operation:

1. Continue to promote office automation , information enhance work efficiency.
2. Implement e-Service letters externally and delivery service letter though E-Bulletin and email inside the Prosecutors´Office.
3. Actively promote legal knowledge, establish legal education in school, and promote legal database in communities, strengthen policy advocacy such as anti-DUI, anti-drug, anti-drag racing, against bribery, protection for women and children, as well as propaganda on various legal knowledge.
4. Promote acceptance of petition case from the public through phone system, organizing electronic public opinion mailbox, implement public opinion survey and chief pro-secutor in-field visits to increase the number of complaint channels for the public and accepting recommendations.



5. Implement the concept of service government by establishing multifunction and automated service counter operations, namely the establishment of “Single window for returning Criminal Bail,” “Complaint window for victims of serious ” and “complaint mailbox for victims of serious crimes.” The service center answers questions raised by the public. In addition to providing litigation counseling at the site, the application for certification replacement, counseling service for crime victims, application for re-issuance of forensic examination certificate and acceptance of preceding, as well as special desk and chairs, writing means. reading glass writing examples...etc. are also provided at the convenience of the public.

6. The archival application is provided at the service center and so that the public can copy and duplicate the files inquired, strengthening the application services for archives.
7. Organize various on-the-job training the spiritual seminars to enrich employee with professional knowledge and service attitudes, thereby enhance the overall service quality.
8. Implement agency work plan and important business execution and control. Use various meetings to review and improve the flaws discovered from the prosecution and administrative business.

9. The Prosecutors' Office offers website for introduction to the agency, public tour, public service, litigation counseling, legal promotion and education, e-Bulletin, and links to related websites. The public is encouraged to the website for more information. To cooperate with the Executive Yuan's promotion in single window for government network service and convenience e-Service from the Ministry of Justice to the public, the Prosecutors Office website also adds a link to "My e-Government" and "Ministry of Justice Online Service Application System." The public are expected to stay and apply for services online through an increasing number of enhanced services each year.

## VIII 、 Conclusion:

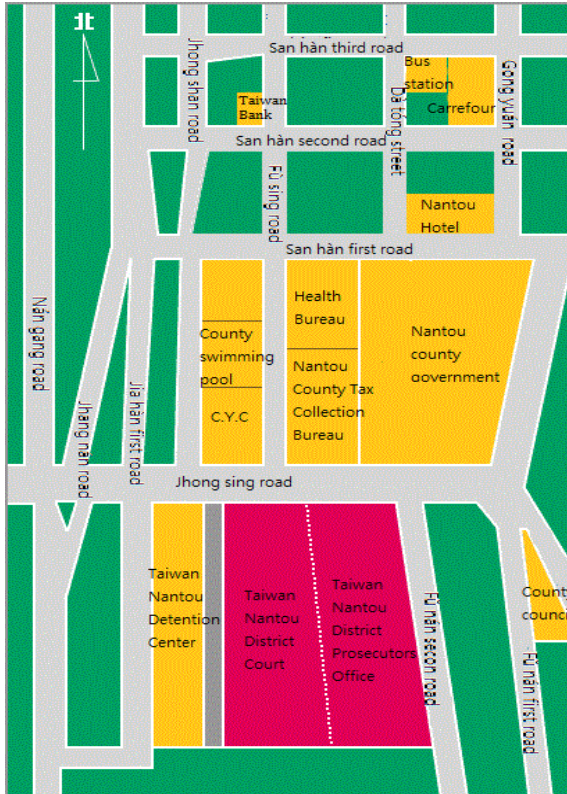
To maintain public order, the top priority is to take appropriate measures for regional circumstances, understand local characteristic, know what is good for people, and solve their sufferings, so that we could be close to the people and eliminate their grievances. Farmers are major population in Nantou County, which has simple people and modest life. What affects the people most are some small problems that occur in everyday life. For example, if tools, betel nuts and electric wires are stolen, victims' livings will be directly affected and people will be upset. What we need to do is to solve these cases and prevent them from happening again so that we can effectively eliminate grievances and reassure the public.

That is why we care most about "Civil-Related Crime" and "State Land Conservation" . We investigate constantly in order to solve civil-related crimes by prompt and proactive investigation to give people back their life of tranquility. Luckily, our efforts have not been in vain and our reputation is good. Yet we are not complacent over any success. We will work harder in the future and execute the policy of “temper justice with mercy” from the Ministry of Justice, as well as implement the Carbon Reduction Measures and Code of Ethics and strengthen the human right protection of women, children, defendants from social vulnerable groups and victims. We wish to promote morale and hope to reach a status of sustainable good order and stability.

# IX、Service Information:

## 1. Map guidance

Location of Taiwan Nantou District  
Prosecutors Office



## 2. Transportation Information

### (1) By bus

Stop at Nantou main station and go west through San han third road. Turn left to Fusing road toward Taiwan Bank and walk about 500m.

### (2) By car

Leave Formosa highway through Nantou Interchange and take Taiwan third line toward Jhushan direction about 5 km. Left turn to Jhongsing road and drive for 200m.

### 3. Communication information

◆Address: 757 Zhong sing road, Nantou City,  
Nantou County

◆Telephone: (049)224-2602

◆Our website:

<http://www.ntc.moj.gov.tw>

◆Our facebook page:

<https://www.facebook.com/nantou.prosecutors.office>

◆E-mail (E-mail of Chief prosecutor):

[ntcmail@mail.moj.gov.tw](mailto:ntcmail@mail.moj.gov.tw)



◆Mail address for reporting: Nantou post  
office mailbox No.180

◆Service center: (049)224-2975、  
(049)224-2602 to 2013

◆Telephone for reporting: (049)224-2275

◆Our facebook page

◆Our facebook page

QRCODE



QRCODE

